

COOL BREEZE

The truth behind Australia's 'Cool Breeze'



COMMERCIAL EVAPORATIVE AIR CONDITIONING

THE COOL BREEZE RANGE OF UNITS ARE AVAILABLE IN DOWN, SIDE AND TOP DISCHARGE MODELS.



DOWN DISCHARGE

Down discharge systems are usually roof mounted, and suitable for both ducted and plenum applications. They represent a very cost effective solution to a cooling problem for many applications including houses and factories.

TOP DISCHARGE

Top discharge units suit applications where convenient access to a floor mounted air conditioning unit is important, or where the installation requires it.



S240 is for installations where side wall access only is available



S100 is for installations where side wall access only is available



SIDE DISCHARGE

Side discharge systems may be either wall or floor mounted and are suitable for discharging directly into a wall register. They may also be ducted into a ceiling cavity, depending on the application. Sound attenuation may be required for a single wall register application.

MODEL	DOWN DISCHARGE TOP DISCHARGE	D095 T095	D125 T125	D160 T160	D195 T195	D230 T230	D255 T255
Motor - Variable speed	Voltage	220-240	220-240	220-240	220-240	220-240	220-240
	Watts	600	600	750	1000	1000	1000
	Amp Draw low/high	2.65/3.6	2.65/3.6	2.7/3.85	2.9/5.6	2.9/5.6	2.9/5.6
	RPM - low/high	600-750/1370	600-750/1370	600-750/1350	850/1400	850/1400	850/1400
Fan	Auswing II 35°	X	X				
	Auswing II 40°			X			
	Powerflow Fixed Pitch				X	X	X
Pump	35 LPM	X	X	X	X	X	X
Filter Media - Celdek	Number of Pads	4	4	4	4	4	4
Size mm		830x370	830x460	830x460	830x535	830x650	830x770
Thickness mm		75	75	100	100	100	100
Design Air Flow (see note ①)	cmh	7500	10000	12500	15000	18000	19500
	cfm	4400	5900	7400	8900	10700	11600
	Lit/sec	2000	2800	3500	4200	5000	5400
Depth/Width mm		1090x1090	1090x1090	1090x1090	1090x1090	1090x1090	1090x1090
Height mm		570	660	660	735	850	970
Height Above Dropper mm		310	400	400	475	590	710
Operating Weight kg		82kg	84.5kg	86kg	92.5kg	94kg	97.5kg
Dropper Duct size		550 x 550	550 x 550	550 x 550	550 x 550	550 x 550	550 x 550

MODEL		S105	S240
Motor - Variable speed	Voltage	220-240	220-240
	Watts	600	1000
	Amp Draw low/high	2.65/3.6	2.9/5.6
	RPM - low/high	600/1370	850/1410
Fan		Auswing II 40°	Powerflow Fixed Pitch
Pump	35 LPM	X	X
Filter Media - Celdek	Number of Pads	3	3
Flute Size 7050/45	Size mm	1 x 830H x 930W 2 x 270H x 930W	3 x 830H x 950W
	Thickness mm	75	100
Design Air Flow (see note ①)	cmh	8000	18500
	cfm	4800	10700
	Lit/sec	2200	5100
Depth/Width mm		1090 x 470	1090 x 1090
Height mm		1090	1320
Operating Weight kg		67.5kg	92kg

CONTROLLERS

Auto Control System >
Model QA



< Manual Control System
Model QM

	QA SERIES	QM SERIES
Touch Pad	✓	✓
LED Display	✓	✓
10 Speed Fan		✓
100 Speed Fan	✓	
Auto Temp Mode	✓	
Auto Timer Mode	✓	
Cool/Fan only Mode	✓	✓
Exhaust Mode	✓	✓
Sleep Timer	✓	
Pre-cool wash cycle	✓	✓
5hr Water Drain	✓	✓
Adjustable Water Drain	✓	✓
After-Use Auto Drain	✓	✓
End of Day Rinse Cycle	✓	✓

Model D500



Single Phase Large Capacity

QM WALL CONTROLLER



- Simple to use
- Variable speed fan Fan Speed Control
- On/Off Cool Mode

MODEL		D500
Motor - Variable speed per motor	Voltage	220-240
	Watts - Model TACEVA	1000W x 2
	Amp Draw low/high	2.9/5.6 x 2
	RPM - low/high	850/1410
Fan	Powerflow Fixed Pitch	✓
Pump	35 LPM	x 2
Filter Media - Celdek Flute size 7050/45	Number of Pads	6
	Size mm	2x960Hx928W 4x960Hx645W
	Thickness mm	100
Cooling Capacity m ³ (Comcool Zone ②)		1200
Design Air Flow* ①	cmh	36000
	cfm	21300
	Lit/sec	10000
Dropper Duct Size		1165x585
Depth/Width mm		1630x1200
Height mm		1160
Height Above Dropper mm		910
Operating Weight kg		114kg

COOL BREEZE MOBILE

The Cool Breeze Mobile evaporative air conditioner is a heavy duty model unit which has many practical applications.

SIMPLE TO USE

It's easy - plug it into a standard electrical wall outlet and connect to a water supply with a fixed hose connection. If a water outlet is not available, the Cool Breeze Mobile can be filled manually with a hose.

FEATURES

- 100mm thick Celdek pads ensure an unrestricted even airflow.
- Large capacity 100lt water tank with drain.
- Easy to move with heavy duty wheels, two with brakes.
- Robust powder coated steel frame
- Fully adjustable multi-directional grille.
- Optional transport frame available.
- All polymer construction - no corrosion.
- Low maintenance.
- Quieter operation - special dimpled fan.



The Commercial Mobile has a direct drive fan coupled with a heavy duty motor, which ensures long term performance.

MODEL		FM240 - MOBILE
Motor	Voltage (V)	220-240
	Watts	2x1000W
	Amp Draw - low/high current (AMPS)	2.9/5.6
	RPM - low/high SPEED (RPM)	850/1410
	Watts - Low	680
	Watts - Medium (1050 rpm)	800
	Watts - High	1270
Fan	Powerflow Fixed Pitch	✓
Water	Inlet Connection	1/2 inch BSP
	Drain (TAP)	Manual
	Tank Capacity (Litres)	100
Filter Media - Celdek	Number of Pads	3
	Size mm	3 x 830 x 930
	Thickness mm	100
Cooling Capacity m ³ (Comcool Zone ②)		576
Design Air Flow ①*	cmh	18500
	cfm	11600
	Lit/sec	5400
Depth/Width mm		1130x1220
Height mm		1540
Shipping Weight kg		95
Shipping Vol m ³ -		1.9
Operating Weight kg		195

CONTROLLER



- Fan Speed Control - six speeds available. Simply rotate the dial to select your desired fan speed.
- Fan Only Operation - If required, switch off the COOL MODE to circulate fresh outside air.

WHY CHOOSE COOL BREEZE

For top air conditioning performance and the best value for money system around, Cool Breeze is the smart choice.

THE POWER OF A COOL BREEZE

RATED PERFORMANCE

Cool Breeze systems have been tested and performance rated. The amount of cooling produced by an evaporative air conditioner is largely dependant on the following factors:

- Fan air flow
- Volume of Celdek Filter Media
- An Efficient Water Management System
- Overall System Design

Compare our larger Celdek filter pads, superior fan performance and higher capacity motors. Cool Breeze systems have one of the highest ratios of air flow and Celdek filter media per square metre of floor area to be cooled of any system on the market today.



SUPER COOL BREEZE FAN TECHNOLOGY

Our powerful fan blades ensure maximum air flow with minimum noise. Our larger systems are fitted with our "Powerflow" fan blade. Note the "golf ball" like dimpled surface to reduce noise and increase efficiency.

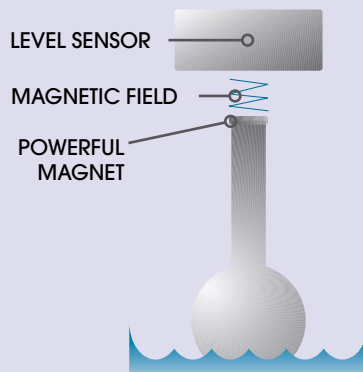
One of the quietest systems in Australia - our testing confirms this. An efficient design coupled with the noise absorbing polymer construction and our advanced fan technology including the unique position of the fan all combine to make our Cool Breeze air conditioner the benchmark in our industry.

All Cool Breeze units have a direct drive fan connected to a heavy duty motor, which ensures long term performance. No belts or pulleys to maintain.

MAGNA-SENSOR

- So Simple - So Reliable

The end of periodic water level adjustment. Cool Breeze systems have our very own automatic water level adjustment system. Accurate to within 1mm, no more sticky ball floats, or rubber washers to wear. No more electronic probes to become corroded. Our MAGNA-SENSOR is guaranteed never to require adjustment. The simplicity and accuracy of the MAGNA-SENSOR uses magnetic field technology to measure and regulate water flow and levels in the base.



DURABLE POLYMER CONSTRUCTION

Manufactured by BASF, Luran-S is a premium grade and exceptionally tough polymer, specifically designed to withstand the most trying environmental conditions. This has been proven by numerous tests in the extreme deserts of Australia and the United States.

It's integral strength, resistance and durability to weathering, including UV degradation is unmatched by any other casing material. There is absolutely no corrosion that is common in metal casings.



LOWER MAINTENANCE

Reduced maintenance means lower costs, longer life.
Always ready to cool when required.

WATER MANAGER*

Cool Breeze Systems Have a Water Management System Installed as Standard.

We believe that an Auto Drain and Clean Water System is a vital and necessary part of every air conditioning system, unlike some of our competitors who offer it as an optional extra.

(*NOT APPLICABLE TO MOBILE UNIT)

• Clean and Dry Tank

When your system is switched off, all water is drained from the tank. This means no mouldy smells or stale water.

• Uses Less Water

Unlike bleed-off systems which continually drain water in order to maintain water purity, the Cool Breeze Water Manager effectively minimizes water usage by only diluting and replacing the water in the tank when necessary.

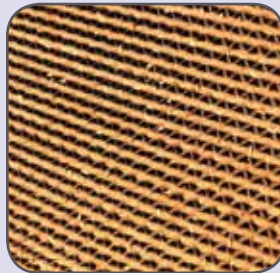
• Cooler Air

Cleaner pads and cleaner water means higher saturation efficiency and therefore cooler air.

• Drain Valve

The heart of the Cool Breeze Water Management System is our very own unique patented Drain Valve. Using the simple counterweight principle of a tank of water and leverage to open and close the valve, we feel that our drain valve could almost last forever.

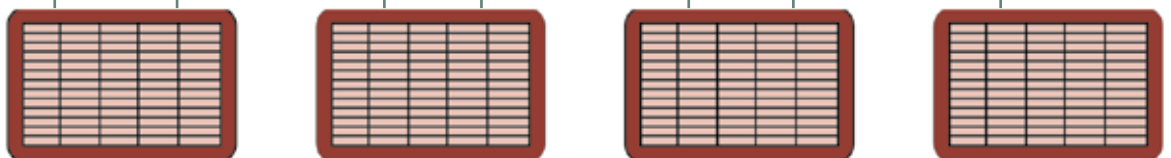
There is virtually nothing to break or wear. Unlike some of the competitors who use electric motors, solenoid valves and complex pressure systems, the design simplicity and reliability of our system is a first in our industry. The best ideas are usually the simplest.



SINGLE CONTROLLER OPTION



QM WALL CONTROLLER



AIR CONDITIONING UNITS

This option provides full control of a series of air conditioning units all from the one keypad controller.

- Operation of multiple air conditioning units using one keypad.
- Eliminates the need to run cable to individual control switches resulting in lower installation costs.
- Convenience of only one keypad per group of units.

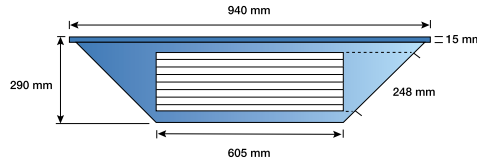
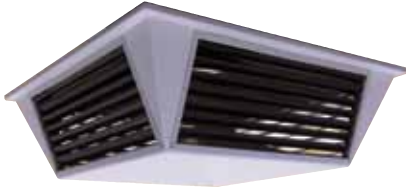
CEILING PLENUMS

For top air conditioning performance and the best value for money system around, Cool Breeze is the smart choice.

- White all-polymer (ABS) construction
- Blades - anodised aluminium
- Adaptors 2 & 3 designed to replace two standard T-Bar mounted ceiling tiles.

MODEL AGP2

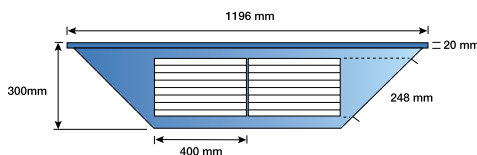
Suits 550 x 550 dropper with optional Adaptor 2.



Adaptor 2

MODEL AGP3

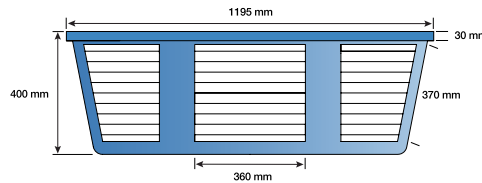
Suits 550 x 550 dropper with optional Adaptor 3.



Adaptor 3

MODEL AGP38

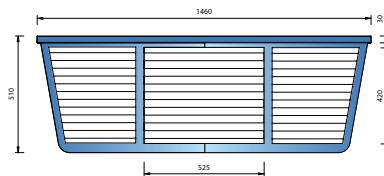
Suits 550 x 550 dropper with optional Adaptor 3.



Adaptor 38

MODEL AGP4

Suits 1165 x 585 dropper with optional Adaptor 4.
Cool Breeze twin fan unit.



Adaptor 4

PLENUM	FREE AREA M ²	CAPACITY M ³ AT 6.5M/SEC	CAPACITY M ³ AT 7.5M/SEC
AGP2	.62	14500	17000
AGP3	.83	19500	22500
AGP38	1.07	25000	28800
AGP4	1.30	30500	36000

- ① Allows comparison with systems rated under the old "Air Flow" and "Air Change" method of sizing which were based on "Design" or nominal air flow ratings.
- ② Based on Comcool Zone 2 at 2.4m ceiling height. Comcool is an Air Group Australia design system used for sizing evaporative air conditioners in various regions of Australia. Consult your dealer for details.

Air Group Australia reserves the right to make product changes without prior notice.

Evaporative air conditioning cooling performance is affected when high humidity conditions exist.

Installation and commissioning to manufacturer specifications, industry standards and state regulatory laws is the responsibility of the installer.

YOUR AUTHORISED DEALER

For further information please contact your authorised dealer or

AIRGROUP AUSTRALIA

28-30 Division Street Welshpool Western Australia 6106

Telephone: (61+8) 9350 2200

Fax: (61+8) 9353 4225

Email: sales@airgroup.com.au

Web: www.coolbreeze.com.au

ABN 68 547 176 720