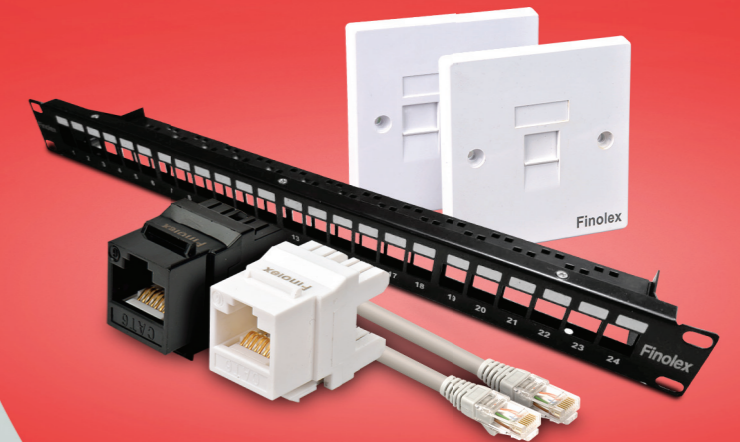


STRUCTURED CABLING SYSTEMS



**XCEEDS
EXPECTATIONS**

PRODUCT CATALOG



Send us a Hi!
on **2027506219**
to register your
complaint.



Finolex
:DELIGHT

Customer Care
1800-209-0166
customer@finolex.com

Finolex
Cables Limited

[f /Finolexcables](#) [t /Finolexcables](#) [i /Finolex.Cables](#)

26-27, Mumbai-Pune Road, Pimpri, Pune - 411018, India. Tel: 020 27475963 | Visit us at: www.finolex.com | Email: sales@finolex.com | CIN: L31300MH1967PLC016531

FOR TECHNICAL LITERATURE PLEASE CONTACT OUR BRANCH OFFICES: Ahmedabad: Tel: 079-26584637, 26575639 Fax: 26575743 | Bangalore: Tel: 080-25320176 | Bhubaneswar: Tel: 0674-2530053 | Chennai: Tel: 044-28231514, 28269322, 28284142, 28230341 Fax: 28265768 | Chandigarh: Tel: 0172-5076631, 2637334 | Cochin: Tel: 0484-2408930, 2408492 Fax: 2539107 | Coimbatore: Tel: 0422-2233939, 2333940, 2330997 | Dharwad: Tel: 0836-2746440 | Goa: Tel: 0832 - 2782003, 2782065 Fax : 2783909 | Guwahati: Tel: 0361-2490067, 2410955 | Indore: Tel: 0731-2802646 | Jaipur: Tel : 0141-2332526/29 | Kolkata: Tel: 033-24192494, 24192495 | Lucknow: Tel: 0522-2439815, 4035031 | Mumbai: Tel: 022-22873252, 22820062 Fax: 22852168 | New Delhi: Tel: 011-23715642, 23324748, 3353103, 23353160 | Patna: Tel: 0612-2920185 | Pune: Tel: 020-27475963, 27506200 Fax: 27470344 | Raipur: Tel: 0771-2885595 Fax: 2525800 | Ranchi: Tel: 0651-2284758 | Roorkee: Tel: 01332-224068 Fax: 224069 | Secunderabad: Tel: 040-27721224, 27846988 Fax: 27817463 | Vijayawada: Tel: 0866-2412599

ALL INFORMATION GIVEN HEREIN IS IN GOOD FAITH. FINOLEX SHALL NOT BE LIABLE FOR ANY DAMAGES ARISING OUT OF INCORRECT USE OR INTERPRETATION. In order to derive maximum benefit and utilisation of our products, we advise that these products are stored, installed and commissioned as per the norms prevailing in the place of installation. When decommissioned, these should be disposed using appropriate methods/process specified in respective state / location of use so as not to affect the environment adversely.

CAT6 PATCH CORD UTP

Specifications

Conduct	: 24 AWG Copper Multi-strands
Insulation material	: HDPE
Separator	: Star type
Jacket	: PVC

Electrical Characteristics (20° ± 3°C)

Max. Conductor Resistance	9.38 Ω/100 M
Max Resistance Unbalanced [%]	5%
Max. Mutual Capacitance	5.6 nF/100 M
Max. Capacitance Unbalance	330 pF/100 M
Nominal Characteristic Impedance	100 ± 15 Ω @ 100 MHz
Max. Delay Skew	45 ns/100 M
Max. Capacitance Unbalance	330 pF/100 M
Dielectric Strength	1.5 kv AC for 2 seconds
Insulation Resistance	≥150 MΩ/km
Temperature Rating	-20° to 60°C

Standards

Compliant to ANSI/TIA 568C.2 & ISO/IEC 11801
RoHS

Ordering Information

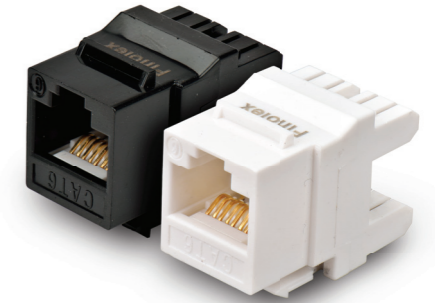
Item Code	Item Description	Colour
70000683	PATCH CORD CAT6 UTP PVC-GRY 1 Mtr	Grey
70000684	PATCH CORD CAT6 UTP PVC- GRY- 2 Mtr	Grey



CAT6 KEYSTONE JACK – PUNCH DOWN

Specifications

RJ45-JACK Plastic Parts	: Poly Carbonate, Flame retardant
PCB Material	: FR-4, 1.0mm thickness
RJ-45 Jack	: 8P8C 50 micro inches gold plated on plug contact area
IDC Pin	: Bronze & Tinned plated
IDC description	: Suitable for 22-26 AWG solid wires



Electrical specifications

Current Rating	: 1.5amps
Insulation Resistance	: >=500mΩ
Contact Resistance	: <=20mΩ
DC Resistance	: <=0.1Ω
Voltage	: AC 1000V

Mechanical specifications

Plug insertion life	: 750 Cycles Min.
Termination punch downs	: 250 Cycle Min.
Operating Temperature	: -40° to 70°C

Standards

Meets CAT6 EIA/TIA 568B. 2-1 Standard.

Ordering Information

Item Code	Item Description	Colour
70000685	KEYSTONE,CAT6 UTP,180DEG, PUNCHDOWN, WHT	White
70000689	KEYSTONE,CAT6 UTP,180DEG, PUNCHDOWN, BLK	Black



PATCH PANEL UNLOADED 24 PORT

Specifications

Panel Frame

Height : 1U
 Width : 19 Inch
 Material : Galvanized and Powder coated steel
 Thickness : 1.0 mm
 Colour : Black

Cable management bar provision and Port labeling provision.

Ordering Information

Item Code	Item Description	Colour
70000688	PATCH PANEL UNLOADED 24 PORT	Black



FACE PLATE

Specifications

- ▶ Flat plate with Shutter and provision for labeling
- ▶ Designed for wall mount and compatible with back box

Material : ABS
 Colour : White
 Available : Single port and Dual Port



Ordering Information

Item Code	Item Description	Colour
70000686	FACE PLATE SINGLE PORT WITH SHUTTER	White
70000687	FACE PLATE DUAL PORT WITH SHUTTER	White

